

E type Power Jack 230kN

S (Spring return) type

Model number

E 23 S 2.5

E type

Capacity (ton)

Spring return (S)

Stroke (cm)

Features

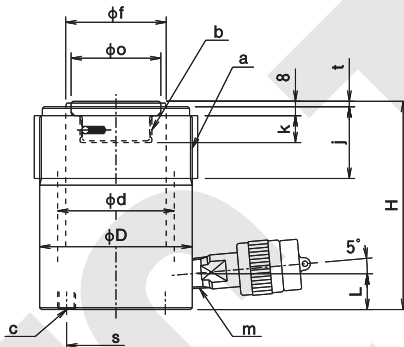
- Piston rod is plated with hard chrome.
- Piston rod seal protects against dirt.
- Saddle for insertable type, in case of use screwed type saddle, contact us.
- Use screwed type saddle when reverse use.
- Metric mounting threads in the base
- Metric mounting threads on cylinder collar
- Designed for light weight and compact type
- Allowable lateral load is 1/20 of lifting capacity.



E23S2.5

Applicable models
E23S2.5
E23S5
(Couplers are leveled to ground.)

Dimensional drawing

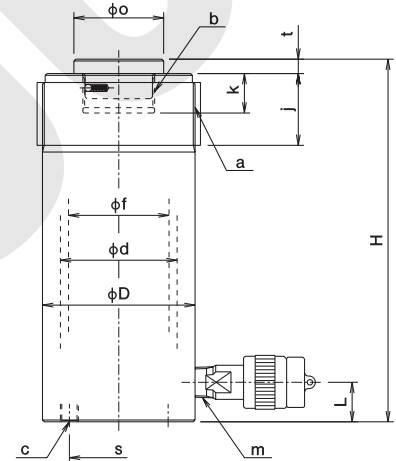


E23S10

Applicable models

E23S10 E23S16
E23S21 E23S25
E23S30 E23S34.5

Dimensional drawing



Specifications

Model		E23S2.5	E23S5	E23S10	E23S16	E23S21	E23S25	E23S30	E23S34.5
Items	Unit								
Capacity	kN(tf)	230 (23)							
Stroke	mm	25	50	100	160	210	250	300	345
Closed height (H)	mm	116	150	202	277	330	376	428	477
Cyl. outer dia. (D)	mm	85							
Cyl. bore dia. (d)	mm	65							
Cyl. effective area	cm ²	33.18							
Oil capacity	ml	83	166	332	531	697	830	996	1145
Weight approx.	kg	5.5	6.5	8	10	12	14	15	17
Collar screw dia. (a)	mm	M85×2							
Collar screw length (j)	mm	40							
Rod screw dia. (b)	mm	M40×2							
Rod screw length (k)	mm	15	22		25				
Base screw dia. (c)	mm	4-M10×15L							
(s)	mm	55							
Rod dia. (f)	mm	56							
Saddle dia. (o)	mm	50							
(t)	mm	3	8						
Port size (m)	—	NPT3/8							
Height to coupler (L)	mm	20	22						
Pumps applicable	Hand pump	TWA-0.7				TWA-0.9	TWA-1.3		
	Motor driven pump	NEX-2 or GH1/2							
Included coupler		B-6JG							